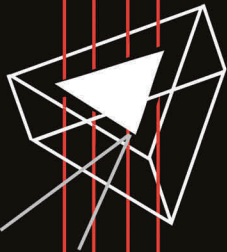


BT-1

E n g l i s h M a n u a l

pdq Ovens



220 Merrimon Avenue
Weaverville, North Carolina 28787
800-221-4769 • 828-658-8330 • 828-658-8363 Fax



Contents:

1. Contents
2. Safety Warnings (please read first)
3. Oven Setup
4. Electrical Connections
5. Electrical Connections: Hardwiring
Electrical and Warning Labels
6. Oven Controls Operation
Operating Suggestions
7. Light Panel and Infrared Emitter Access
8. Over Temperature Protection
Over Temperature Protection Device Check
9. 208-240V Single Phase Wiring Diagram
10. 380-400V Three Phase Wiring Diagram
11. Warranty Information

**FOR YOUR SAFETY, PLEASE
OBSERVE THESE
WARNINGS!**



Dangerous
Electrical
Voltage



Caution, refer to
accompanying
documents



Caution
Hot Surface

PDQ Ovens are designed specifically for heating plastics for vacuum forming and have features that make it then inappropriate for other uses. The design is such that heating other materials may be dangerous, or may damage the oven. Protection provided by the equipment may be impaired if the unit is not used in a manner specified by the manufacturer.

Do not install or operate the PDQ Oven on or near flammable materials or gasses. Be sure to allow sufficient ventilation around oven surfaces. OTS Corp recommends 6" minimum.

Cleaning: We recommend cleaning your PDQ Oven with either glass cleaner for water based stains, or a solvent such as acetone or mineral spirits for oil based stains. When using solvents, be sure the oven is turned off and cool to the touch.

Moving the oven: The PDQ Oven is light enough to be moved by 2-4 people. Let the oven cool, disconnect the electrical power and remove the tray before moving the oven.

Oven Setup

To save you freight cost and prevent damage to your new PDQ Oven, we have shipped it to you partially disassembled. These assembly instructions and diagrams should make setup fairly simple. You will require 2-4 people, a 7/16" wrench and a 1/8" and 5/32" hex wrench, along with the included hardware kit, to complete the setup.

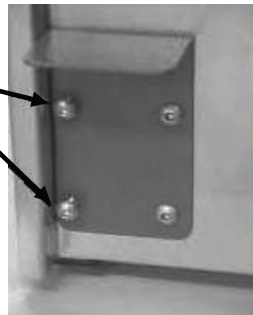


1. Unband and unpack the oven.
2. If mounting on a bench, simply lift oven onto bench, insert tray and plug into an appropriate receptacle.
3. If mounting on legs, remove tray from oven, lay down a piece of cardboard to protect the oven and gently lay the oven on its back. *(If using the casters, install the casters to the legs before installing the legs.)*



4. Remove the 4 plastic plugs exposing the leg receptacles and insert the tubular end of the legs into the receptacles. Insert and tighten the 1/4-20 hex bolts in the leg supports. *(Note that the angled supports on the legs run from front to back on the two front legs and side to side on the two back legs.)*
5. Using 3-4 people, stand the oven upright. Tighten the 4 set screws on the back and the 4 button head screws on the front completing the installation.
6. Plug cord into appropriate receptacle.

The two outer most button head screws on the door stops secure the front legs.



Electrical Connections



All electrical connections must be performed by a certified electrician following all national and local codes and regulations.

External Circuit Breaker and Shut Off Required

208-240 volt single phase units are shipped with a NEMA 10-50 plug for use with a NEMA 10-50 R receptacle or can be hardwired to your electrical system utilizing an external circuit breaker and shut off mounted as close as possible to the oven.

380-400 volt 3 phase units are provided with a 16A-6h plug and 8' of VDE rated cord. The oven must be connected to an external circuit breaker and shut off mounted as close as possible to the oven.

208-240 Volt Single Phase

Oven Model	Actual Amperage	Recommended Circuit Breaker
BT-1	13 Amp	20 Amp

380-400 Volt Three Phase

Oven Model	Actual Amperage	Recommended Circuit Breaker
BT-1	5 Amp	Check Local and National Regulations

Electrical Connections: Hardwiring

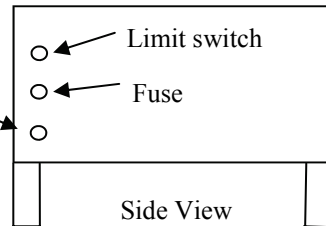
CAUTION: SHEETMETAL EDGES MAY BE SHARP



CAUTION: Only perform the following 5 steps if you are hardwiring your oven to your electrical system

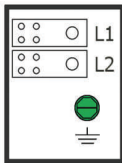
1. Remove the screws securing the electrical panel (back panel) with a 1/8" hex wrench
2. Remove the main power supply cord.
3. Attach conduit from the external shut off to the oven.
4. Connect the power wires to the terminal blocks and green ground screw.
5. Reinstall the electrical panel. The oven is ready for use.

Main power supply cord is attached here.
Remove only if you are hardwiring the oven to your electrical system.

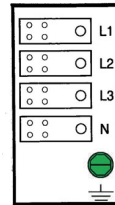


Electrical and Warning Labels

208-240
volt
1 phase



Main Terminal
Blocks



380-400
volt
3 phase



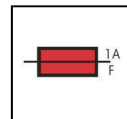
Dangerous
Electrical
Voltage



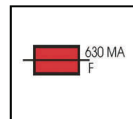
Caution, refer to
accompanying
documents



Caution
Hot Surface



1 Amp
Fuse
208-240V



630 MA
Fuse
380-400V



Main
Switch
Control

Oven
Control



Oven Controls Operation

380-400 Volt Ovens:



OFF ON

The **MAIN SWITCH** is located on the control panel on the front of the oven. Rotate the knob to the ON position to enable oven use.

208-240 and 380-400 Volt Ovens:



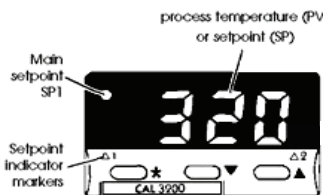
OFF ON

The **OVEN CONTROL SWITCH** is located on the control panel on the front of the oven. Rotate the knob to the **ON** position to enable oven use.

The **TEMPERATURE CONTROLLER** is located on the control panel on the front of the oven. To set the temperature of the oven, press and hold the left hand (★) button and either increase the set point using the right hand (▲) button, or decrease the set point using the middle (▼) button.

Routine adjustments

- ★ View set point
- ★ ▲ Increase set point
- ★ ▼ Decrease set point



Operating Suggestions

1. Preheat the oven and tray to the desired cooking temperature.
2. Place the plastic in the center of the cooking tray and slide it into the oven.
3. Your new PDQ Oven will work best if set at 400°F or 204°C for plastics such as Polypropylene, Copolymer and Polyethylene. Special plastics may require a different setting.
4. Plastics less than 1/8" or 3mm cook best when utilizing a "cool tray" or by removing the tray from the oven and allowing it to cool to room temperature before placing the plastic on the tray and sliding it into the oven.
5. Colored plastics generally will require 2-3 minutes longer to cook than the same thickness natural color plastics.



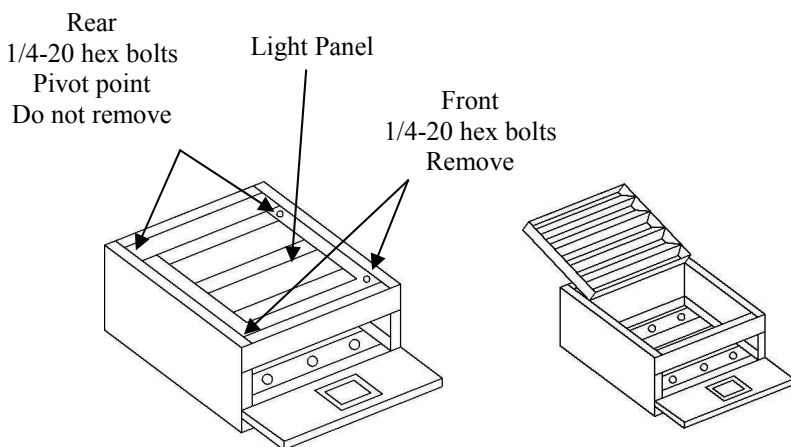
The Teflon sheeting on the tray is a durable nonstick material. However, it is not indestructible. It is wise to exercise care when using it. For example, avoid sliding hard objects across the surface. As with other materials, the surface will degrade over time.

Light Panel and Infrared Emitter Access



CAUTION: Sheet metal edges may be sharp

1. Disconnect electrical power to the oven and ensure the oven is cool to the touch.
2. Remove the 6 screws securing the top trim ring and door catch with a 1/8" hex wrench and remove the trim ring and lid.
3. Gently remove the 3" wide strips of insulation from each side of the light panel.
4. Locate and remove the two 1/4-20 hex bolts securing the front of the light panel as shown below.



5. Carefully lift the front of the light panel, then gently lay the light panel back against the oven frame as shown.
6. If access to the infrared emitters is required, remove the 3 screws securing each light guard. ***(When reinstalling the light guards tighten the 3 screws so that the light guards lightly touch the bottom of the emitters for support.)***



(Do not to twist the light panel and be sure to keep the light panel wires from pinching or binding.)

7. Installation is reverse of removal.

CAUTION: INFRARED EMITTERS ARE FRAGILE. HANDLE WITH CARE

Insert the threaded ends of the emitter into the L-Brackets in the light panel. Holding the ceramic at the end of the emitter, so as not to disconnect it from the glass portion of the emitter, tighten the nuts at each end against the L-Bracket. Each emitter and two L-Bracket assembly is intended to “float” to allow for emitter expansion and contraction.

Note:

Ensure a tight connection here. A loose connection will cause arcing and damage to the L-bracket and emitter.



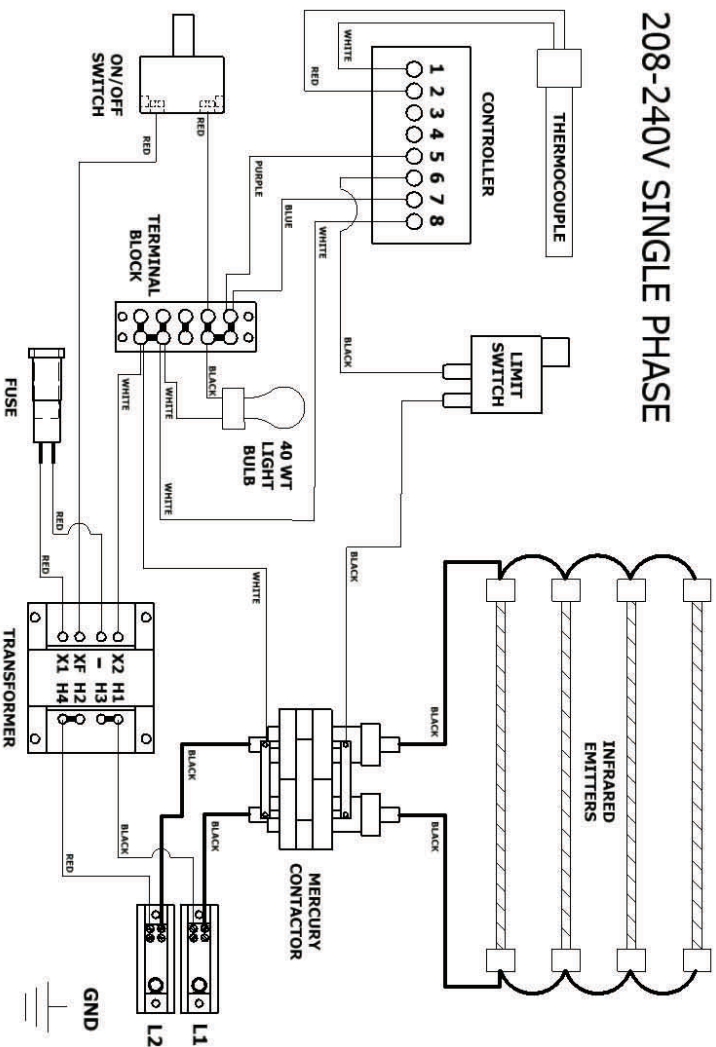
Over Temperature Protection

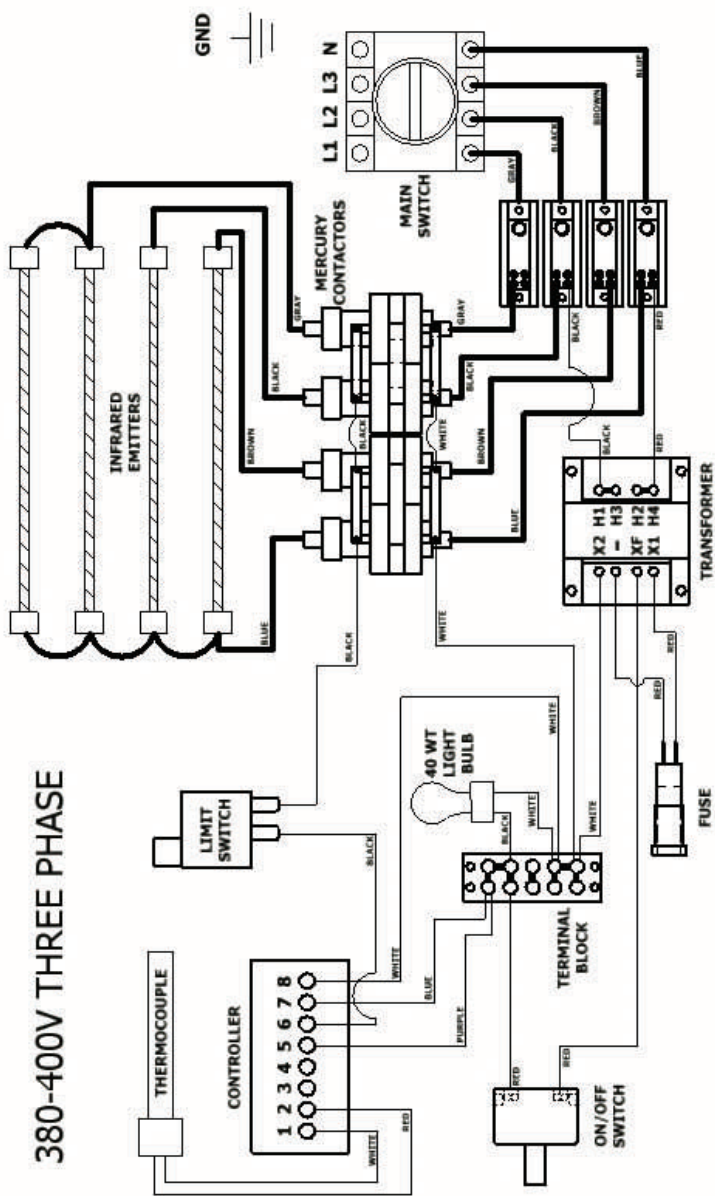
The PDQ Ovens have a maximum temperature setting of 450°F or 243°C. In addition an over temperature shut off device (**Limit Switch**) is supplied that will turn the emitters off if the temperature exceeds 500°F or 260°C. A reset button is located on the side of the oven above the main power supply entry point. Unscrew the cap and push the button firmly if an over temperature situation occurs.

Over Temperature Protection Device Check

1. Disconnect electrical power and ensure the oven is cool to the touch.
2. Remove the devices' temperature probe (short copper bulb and capillary tube not the long chrome probe) from the mount on the inside of oven.
3. Insert probe into a handheld dry-well calibrator (ex. Hart Scientific 9100S) and heat the probe.
4. The device should trip between 500°F and 525°F.
5. Allow the probe to cool to room temperature and reinstall in mount.
6. Reset the device by pressing the reset button on the device.

208-240V SINGLE PHASE





PDQ OVEN 1 YEAR LIMITED WARRANTY

OTS Corporation ("Seller") warrants to the original purchaser ("Purchaser") that the PDQ Oven manufactured by Seller is free from defects in material and workmanship under normal use and service, but only if it has been properly installed and operated. Seller's obligation under this warranty shall be limited to the repair or exchange of any part or parts which may prove defective under normal use and service within one (1) year from the date of purchase by Purchaser. Any such defective parts must be returned to Seller's factory at Weaverville, North Carolina not later than one (1) year after purchase of the PDQ Oven. Parts not manufactured by Seller will carry only the warranty of their manufacturer. Transportation charges or duties shall be borne by Purchaser. Labor to replace the defective part will be by local, licensed electrician, obtained by the Purchaser with Seller approval, and shall be paid by Seller. The foregoing shall be the limit of Seller's liability for any breach of warranty within thirty (30) days after discovery thereof, but within the one (1) year guarantee period, otherwise, such claims shall be deemed waived. No allowance will be granted for any repairs or alterations made by Purchaser without Seller's prior written consent.

Seller does not warrant its PDQ Oven to meet the requirements of any safety code of any state, municipality, or other jurisdiction, and Purchaser assumes all risk and liability whatsoever resulting from the use thereof, whether used singly or in combination with other machines or apparatus.

This warranty shall not apply to any PDQ Oven or parts thereof, which has been repaired or altered, without Seller's written consent, or which has been damaged as a result of misuse, negligence, or accident, or which has not been operated in accordance with Seller's printed instructions, or has been operated under conditions more severe than, or otherwise exceeding, those set forth in any specifications.

THIS WARRANTY IS EXPRESSLY IN LIEU OF ALL OTHER WARRANTIES EXPRESS OR IMPLIED, INCLUDING THE WARRANTIES OF MERCHANTABILITY AND FITNESS FOR USE, FOR A PARTICULAR PURPOSE, AND OF ALL OTHER OBLIGATIONS OR LIABILITIES ON THE PART OF THE SELLER. SELLER NEITHER ASSUMES NOR AUTHORIZES ANY OTHER PERSON TO ASSUME ANY OTHER LIABILITY IN CONNECTION WITH THE SALE OF THE PDQ OVEN. SELLER MAKES NO WARRANTY WHATSOEVER WITH RESPECT TO ACCESSORIES OR PARTS NOT SUPPLIED BY SELLER.

Seller shall not be liable for any loss or damage resulting, directly or indirectly, from the use or loss of use of the PDQ Oven. Without limiting the generality of the foregoing, this exclusion from liability embraces the Purchaser's expenses for down time or for making up down time, damages for which the Purchaser may be liable to other parties, damages to property, and injury or death of any persons. Seller neither assumes nor authorizes any person to assume for it, any other liability in connection with the sale or use of the PDQ Oven, and there are no oral agreements or warranties in connection therewith.

The warranty hereinabove set forth shall not be deemed to cover infrared tubes, for which Seller shall have no responsibility or liability whatsoever.

Under no circumstances shall the liability of Seller exceed the purchase price paid by Purchaser. Some states do not allow limitations on the length of any warranty or the exclusion or limitation of incidental or consequential damages, so the above limitations or exclusions may not apply to the Purchaser.

For Your Records:

Serial No. _____ Model No. _____

Date Purchased: _____



220 Merrimon Ave., Weaverville, North Carolina USA 28787
800-221-4769 828-658-8330 FAX 828-658-8363